

FERTILISER TEST RESULTS

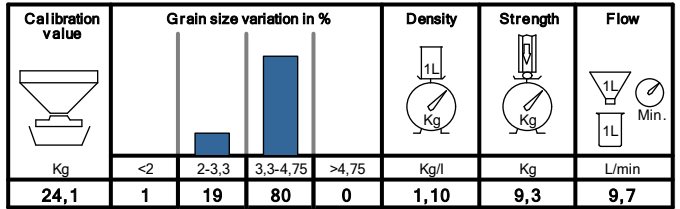


NPK 21-4-10 UKI

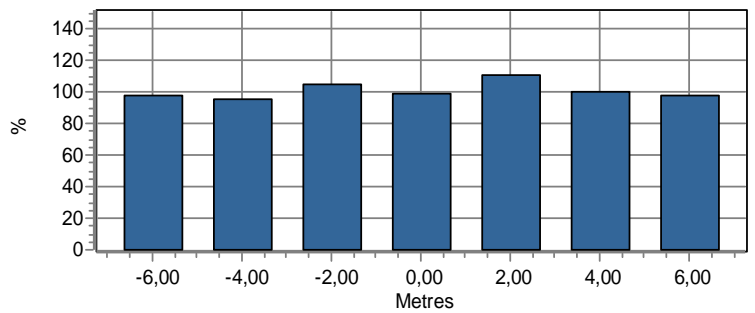
Test number	24166
Date	2018-03-07
Machine type	M35W Gød 2353
Manufacturer	YARA UKI
Fertilizer type	NPK 21-4-10 mila PKEXLG
Spread width [m]	12
Vane type	E1-T
Vane setting	1-2
Scale setting / kg/ha	2,9/333
Coll. amount [Kg/ha]	310
Height [cm] [mm]	750
Tilt angle [degrees]	0
Pattern	NS
PTO speed	540
File name	20180307_07_19.TXT
Coef. of variation [%]	5,4
Max [%]	10,7
Min [%]	-9,2

	Left [%]	Right [%]
Left/Right deviation	49,4	50,6

Specific Fertilizer Analysis

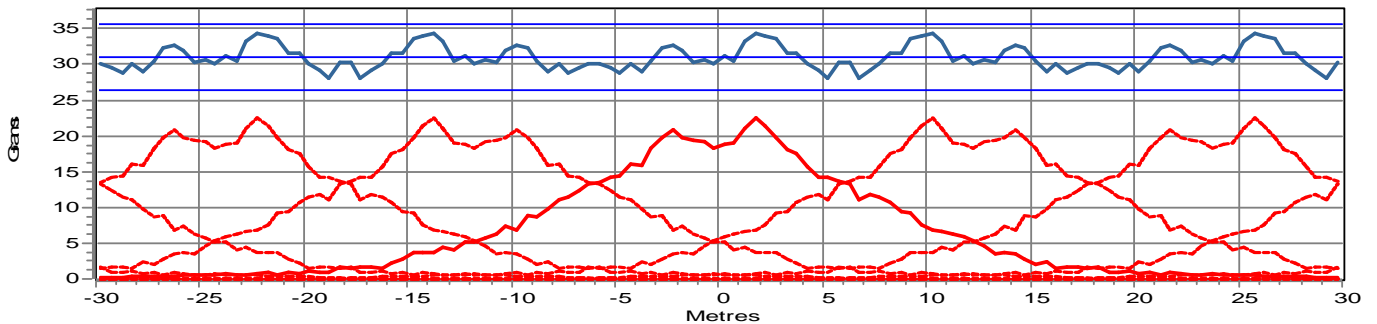


Tray Test Collection

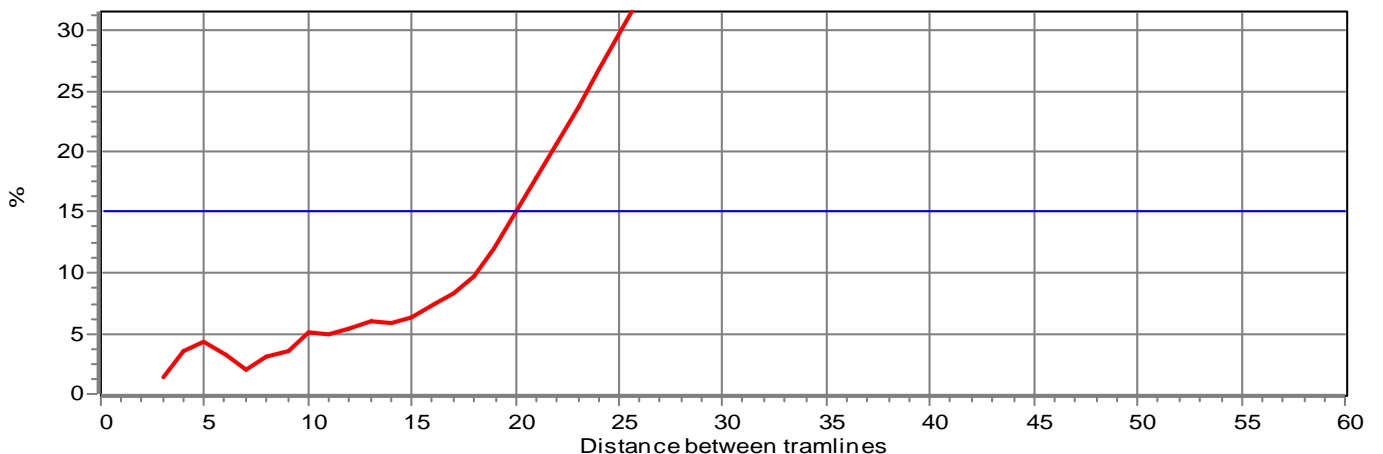


Dist. in metres	-6,0	-4,0	-2,0	0,0	2,0	4,0	6,0
Amount in %	97	95	104	99	110	100	98

Spread Pattern Including Overlap



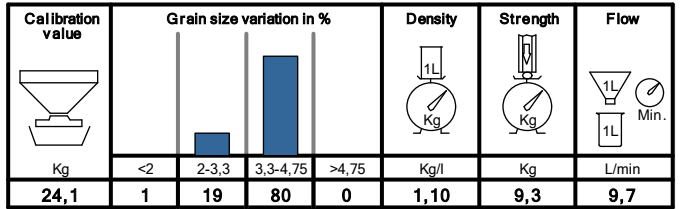
Coefficient of Variation



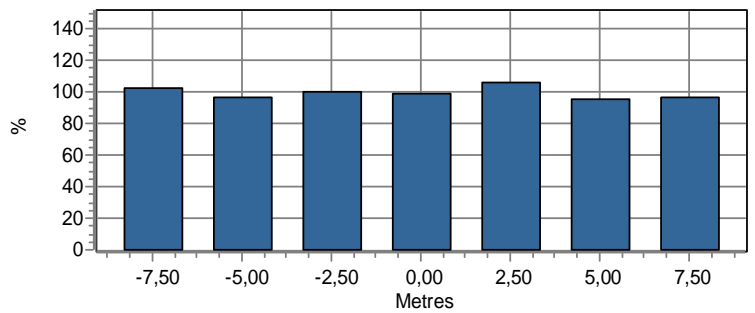
Test number	24164
Date	2018-03-06
Machine type	M35W Gød 2353
Manufacturer	YARA UKI
Fertilizer type	NPK 21-4-10 mila PKEXLG
Spread width [m]	15
Vane type	E1-T
Vane setting	1-2
Scale setting / kg/ha	3,3/333
Coll. amount [Kg/ha]	279
Height [cm] [mm]	750
Tilt angle [degrees]	2
Pattern	NS
PTO speed	540
File name	20180306 14_45.TXT
Coef. of variation [%]	4,6
Max [%]	8,2
Min [%]	-7,2

	Left [%]	Right [%]
Left/Right deviation	49,3	50,7

Specific Fertilizer Analysis

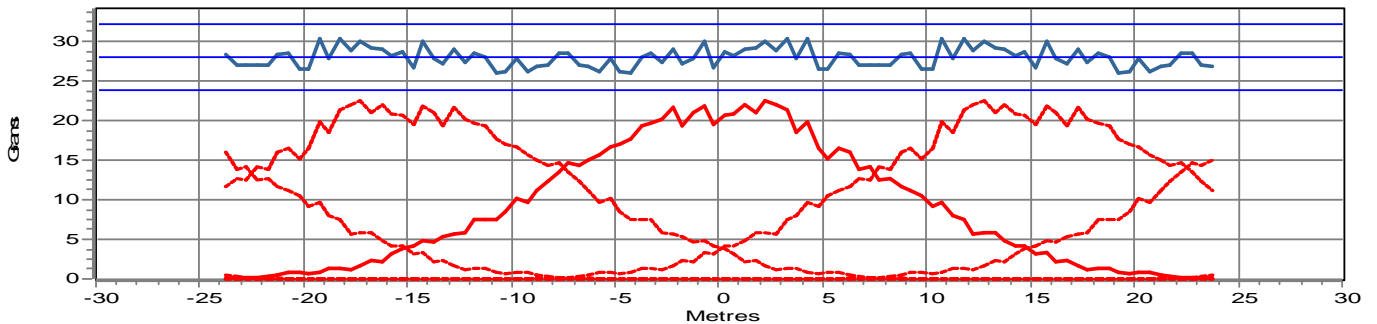


Tray Test Collection

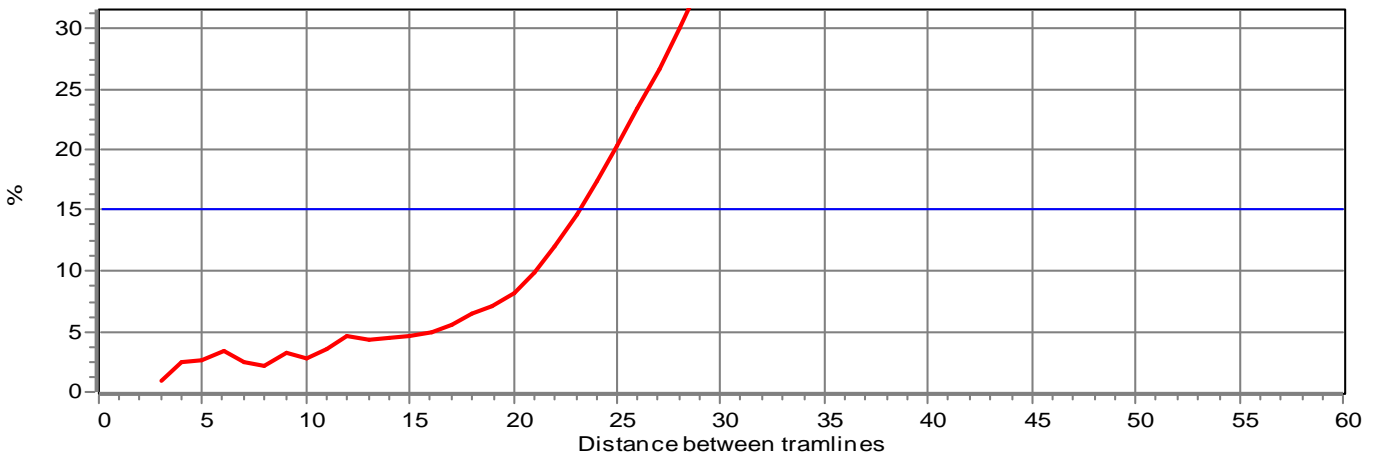


Dist. in metres	-7,5	-5,0	-2,5	0,0	2,5	5,0	7,5
Amount in %	102	96	101	99	105	95	96

Spread Pattern Including Overlap



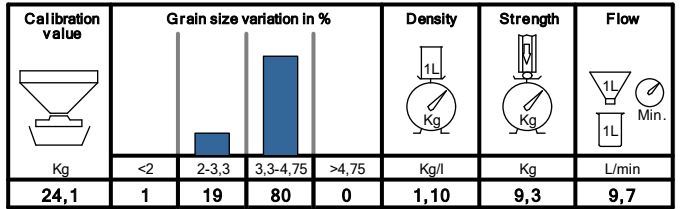
Coefficient of Variation



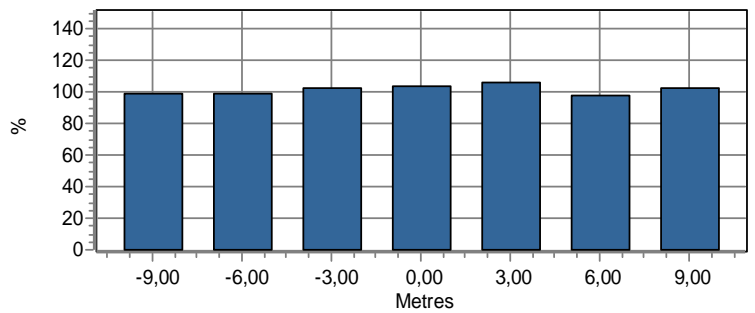
Test number	24160
Date	2018-03-06
Machine type	M35W Gød 2353
Manufacturer	YARA UKI
Fertilizer type	NPK 21-4-10 mila PKEXLG
Spread width [m]	18
Vane type	E1-T
Vane setting	1-2
Scale setting / kg/ha	3,7/333
Coll. amount [Kg/ha]	273
Height [cm] [mm]	750
Tilt angle [degrees]	2
Pattern	NS
PTO speed	540
File name	20180306 14_31.TXT
Coef. of variation [%]	4,4
Max [%]	10,8
Min [%]	-8,7

	Left [%]	Right [%]
Left/Right deviation	50,0	50,0

Specific Fertilizer Analysis

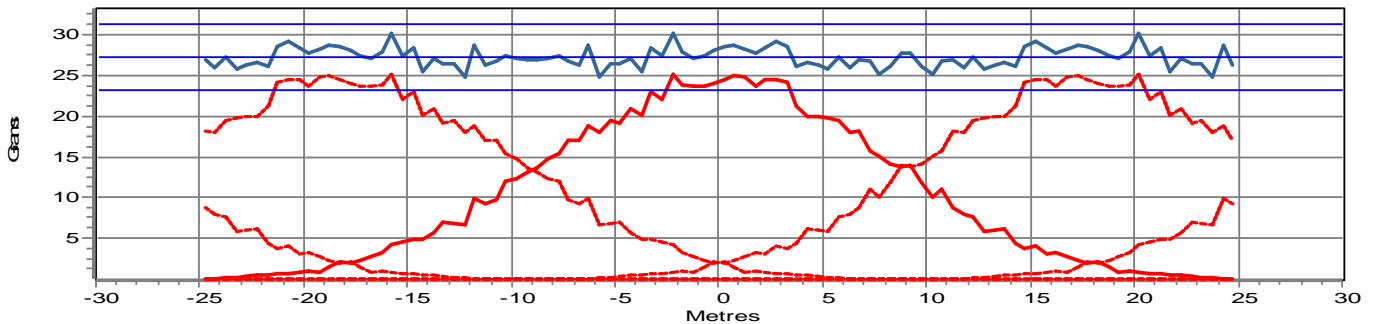


Tray Test Collection

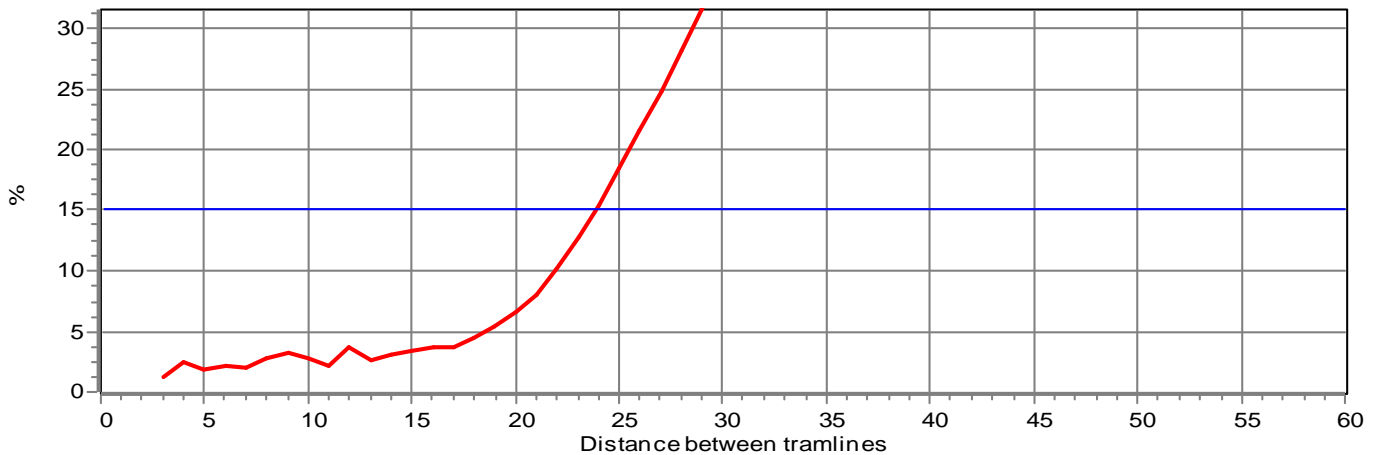


Dist. in metres	-9,0	-6,0	-3,0	0,0	3,0	6,0	9,0
Amount in %	99	98	103	104	106	98	102

Spread Pattern Including Overlap



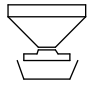
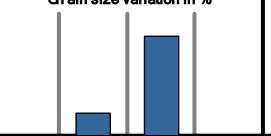
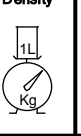
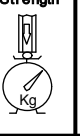
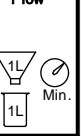
Coefficient of Variation



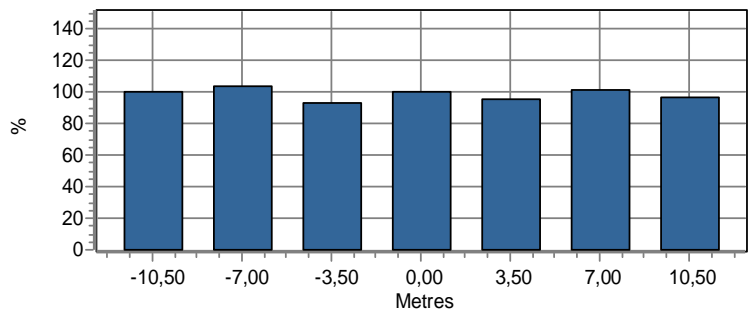
Test number	24176
Date	2018-03-07
Machine type	M35W Gød 2353
Manufacturer	YARA UKI
Fertilizer type	NPK 21-4-10 mila PKEXLG
Spread width [m]	20
Vane type	E2-T
Vane setting	1-2
Scale setting / kg/ha	3,9/333
Coll. amount [Kg/ha]	279
Height [cm] [mm]	750
Tilt angle [degrees]	0
Pattern	NS
PTO speed	540
File name	20180307_08_12.TXT
Coef. of variation [%]	4,7
Max [%]	11,2
Min [%]	-7,8

	Left [%]	Right [%]
Left/Right deviation	49,2	50,8

Specific Fertilizer Analysis

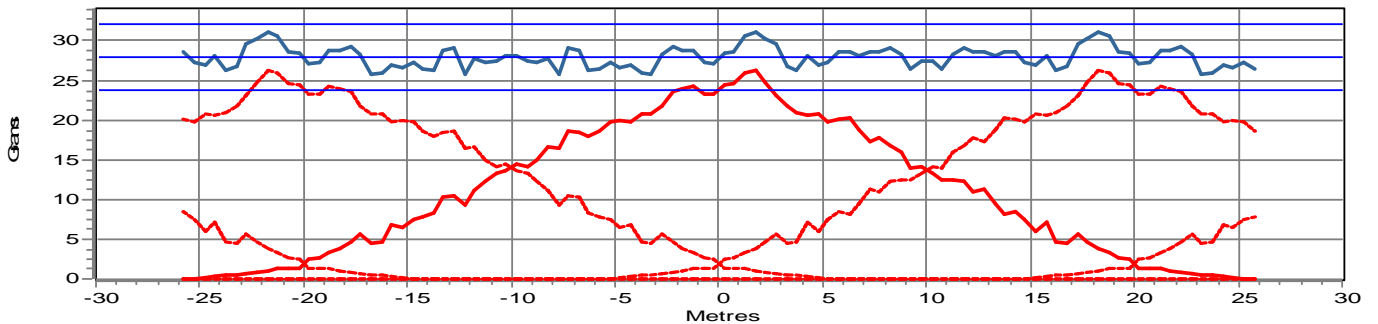
Calibration value	Grain size variation in %				Density	Strength	Flow
							
Kg	<2	2-3,3	3,3-4,75	>4,75	Kg/l	Kg	L/min
24,1	1	19	80	0	1,10	9,3	9,7

Tray Test Collection

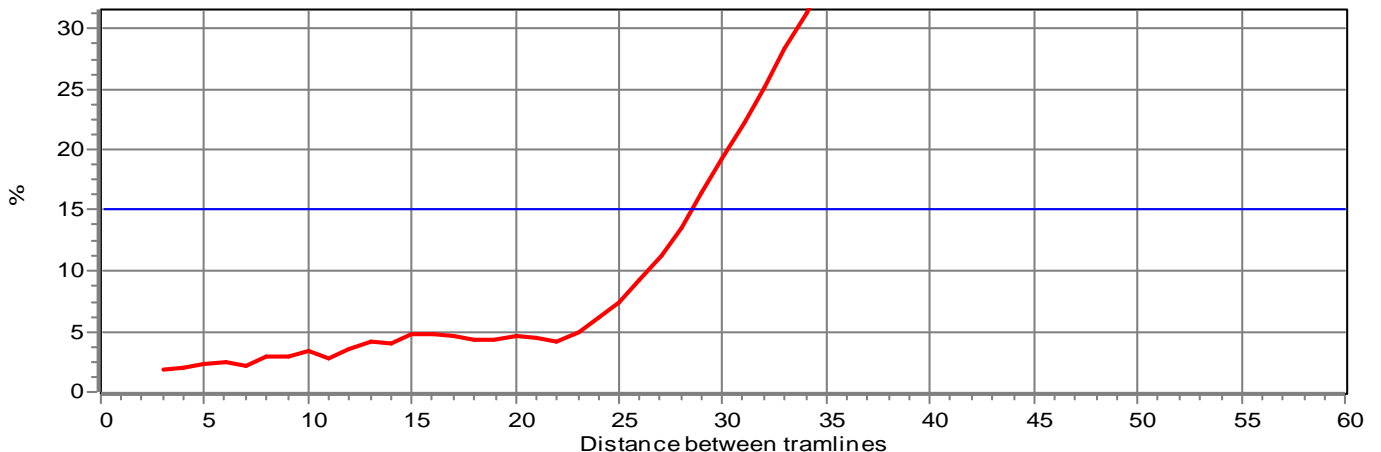


Dist. in metres	-10,5	-7,0	-3,5	0,0	3,5	7,0	10,5
Amount in %	100	104	93	100	95	102	96

Spread Pattern Including Overlap



Coefficient of Variation

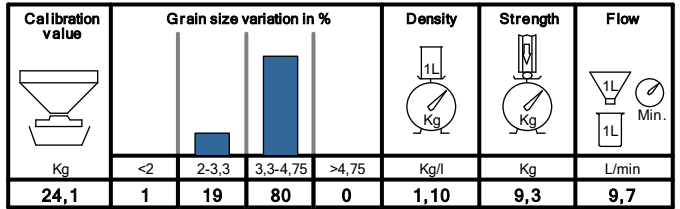


Test number	24173
Date	2018-03-07
Machine type	M35W Gød 2353
Manufacturer	YARA UKI
Fertilizer type	NPK 21-4-10 mila PKEXLG
Spread width [m]	24
Vane type	E2-T
Vane setting	1-2
Scale setting / kg/ha	4,4/333
Coll. amount [Kg/ha]	271
Height [cm] [mm]	750
Tilt angle [degrees]	2
Pattern	NS
PTO speed	540
File name	20180307_08_03.TXT

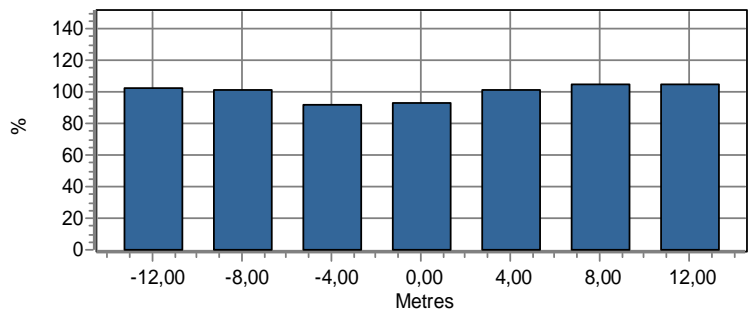
Coef. of variation [%]	4,4
Max [%]	7,3
Min [%]	-12,2

	Left [%]	Right [%]
Left/Right deviation	49,2	50,8

Specific Fertilizer Analysis

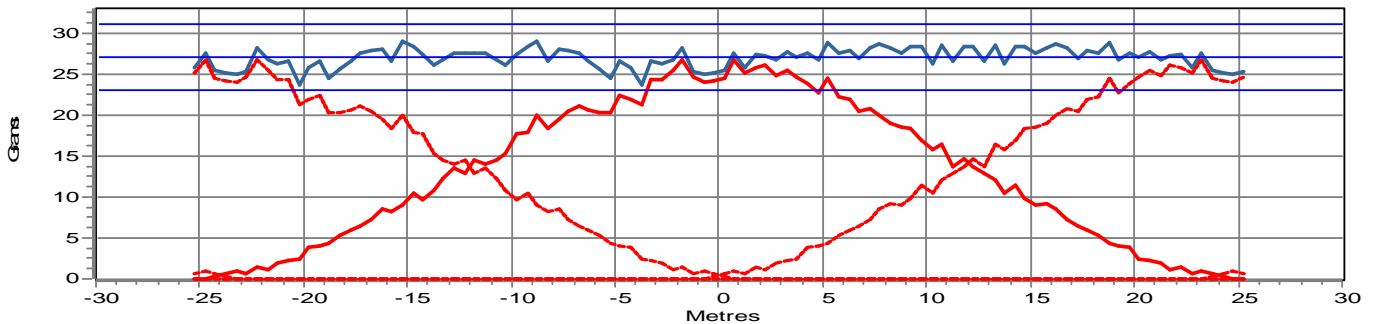


Tray Test Collection

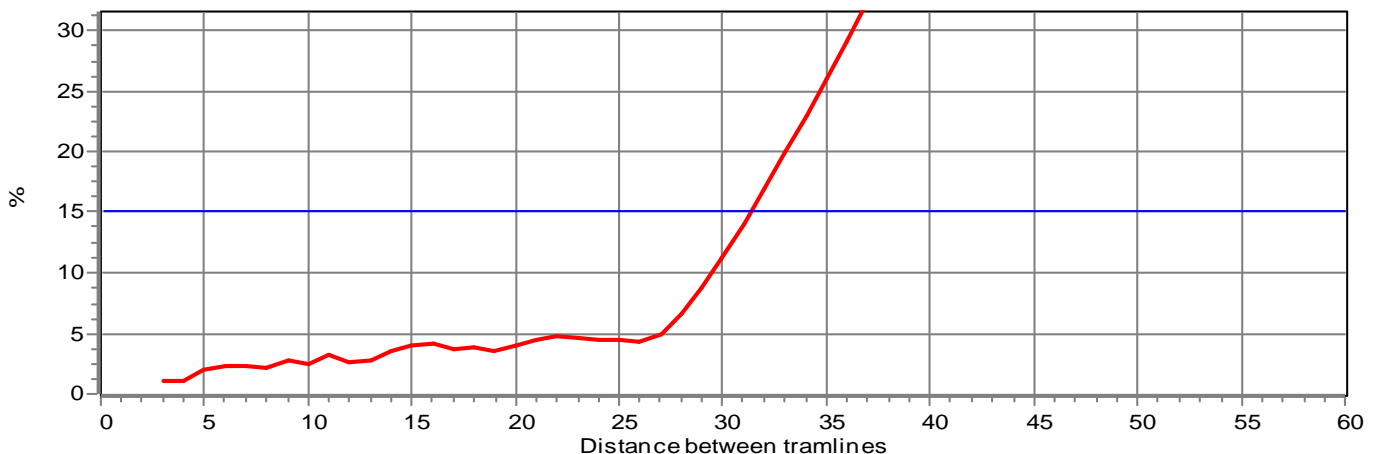


Dist. in metres	-12,0	-8,0	-4,0	0,0	4,0	8,0	12,0
Amount in %	102	101	91	93	101	105	105

Spread Pattern Including Overlap



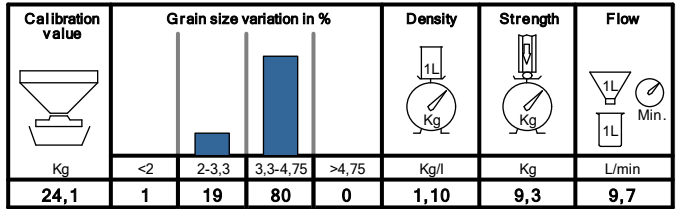
Coefficient of Variation



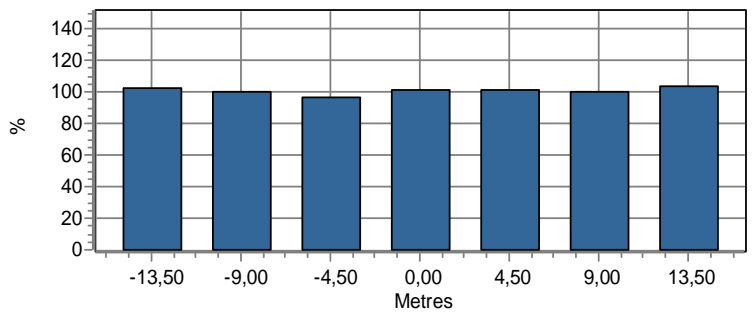
Test number	24191
Date	2018-03-07
Machine type	M35W Gød 2353
Manufacturer	YARA UKI
Fertilizer type	NPK 21-4-10 mila PKEXLG
Spread width [m]	28
Vane type	E6-T
Vane setting	1-2
Scale setting / kg/ha	4,9/333
Coll. amount [Kg/ha]	261
Height [cm] [mm]	750
Tilt angle [degrees]	-2
Pattern	NS
PTO speed	540
File name	20180307_09_54.TXT
Coef. of variation [%]	3,7
Max [%]	9,5
Min [%]	-7,8

	Left [%]	Right [%]
Left/Right deviation	49,2	50,8

Specific Fertilizer Analysis

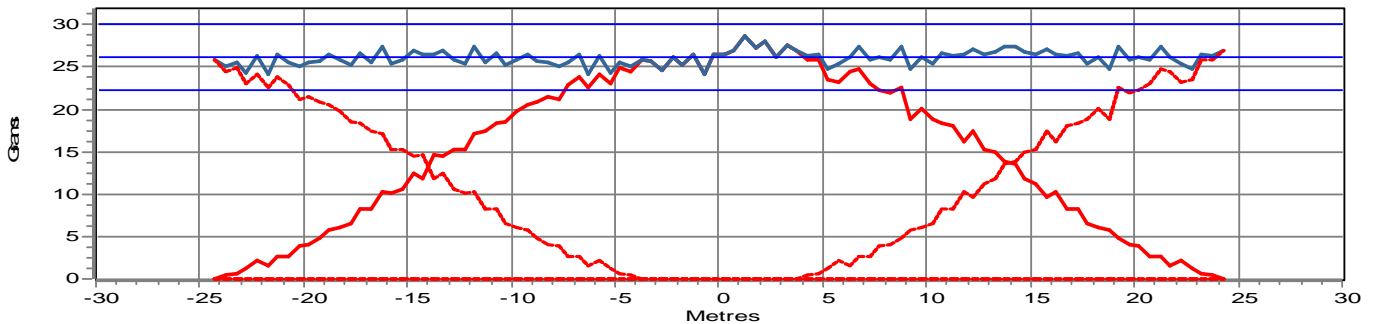


Tray Test Collection

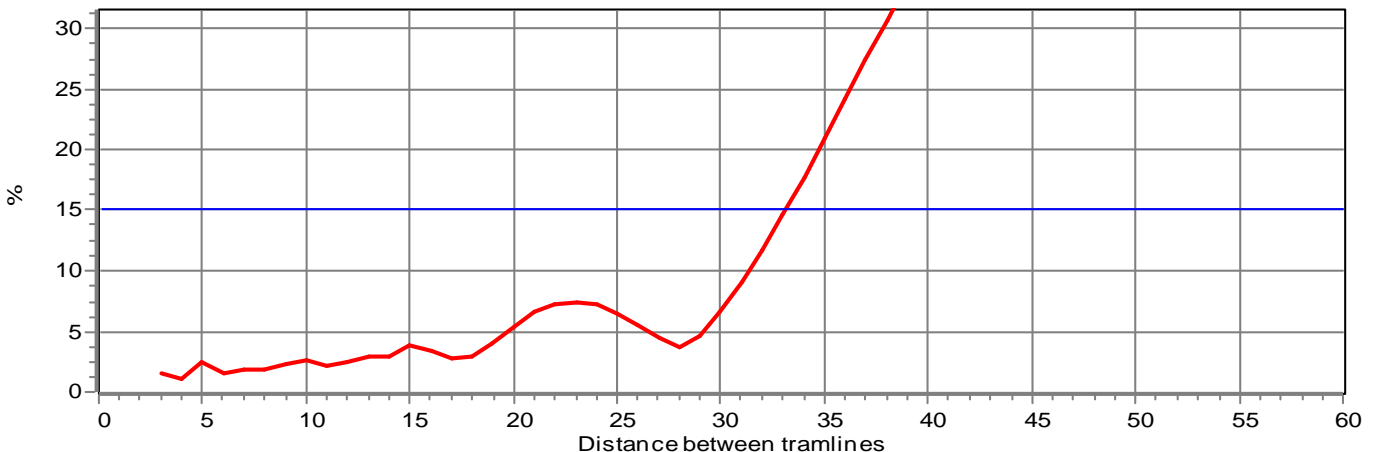


Dist. in metres	-13,5	-9,0	-4,5	0,0	4,5	9,0	13,5
Amount in %	102	100	97	101	101	100	104

Spread Pattern Including Overlap



Coefficient of Variation

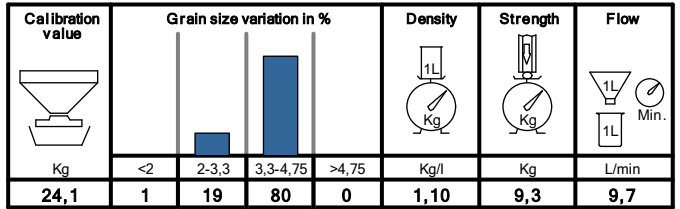


Test number	24188
Date	2018-03-07
Machine type	M35W Gød 2353
Manufacturer	YARA UKI
Fertilizer type	NPK 21-4-10 mila PKEXLG
Spread width [m]	32
Vane type	E6-T
Vane setting	1-2
Scale setting / kg/ha	5,4/333
Coll. amount [Kg/ha]	263
Height [cm] [mm]	750
Tilt angle [degrees]	0
Pattern	NS
PTO speed	540
File name	20180307_09_44.TXT

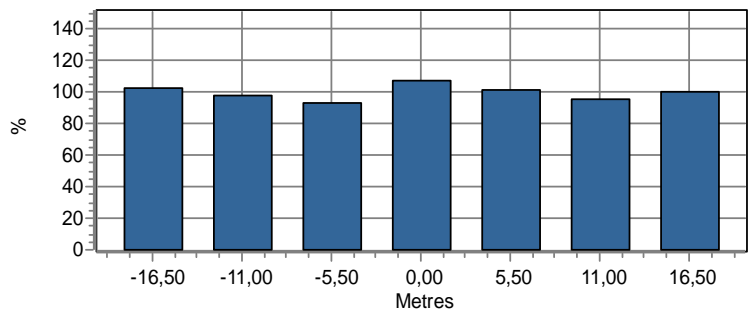
Coef. of variation [%]	5,9
Max [%]	13,1
Min [%]	-15,1

	Left [%]	Right [%]
Left/Right deviation	49,9	50,1

Specific Fertilizer Analysis

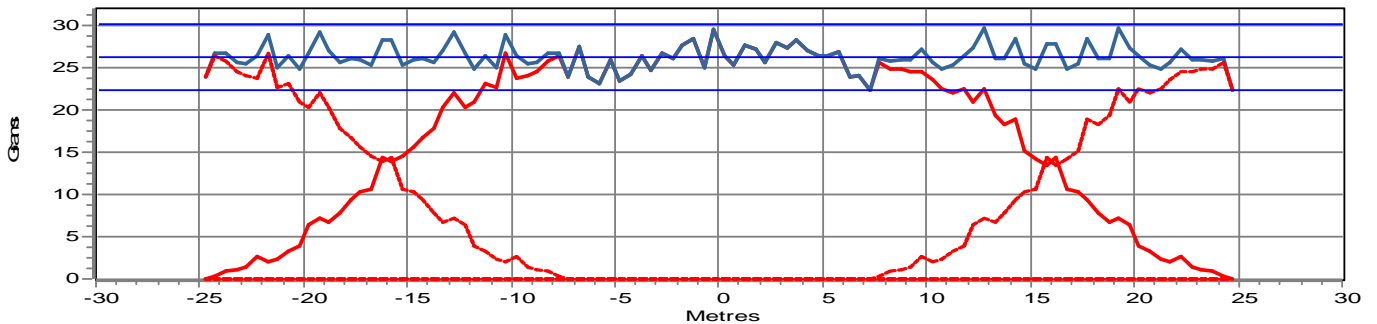


Tray Test Collection

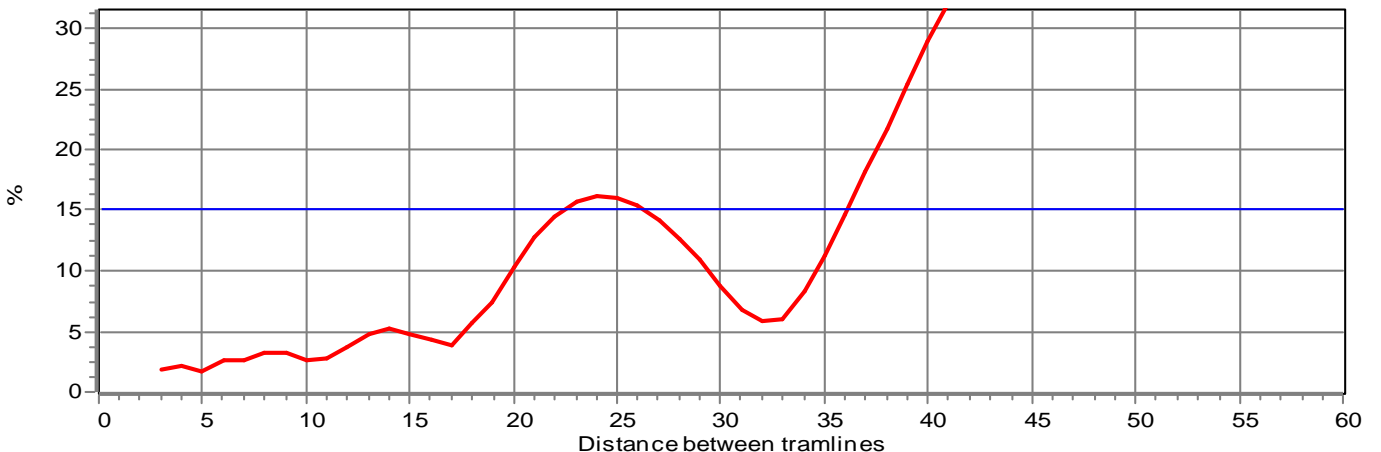


Dist. in metres	-16,5	-11,0	-5,5	0,0	5,5	11,0	16,5
Amount in %	102	98	93	107	102	96	101

Spread Pattern Including Overlap



Coefficient of Variation

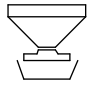
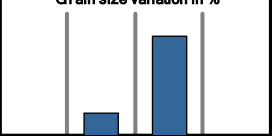
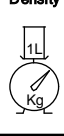
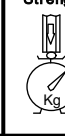
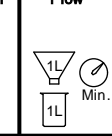


Test number	24184
Date	2018-03-07
Machine type	M35W Gød 2353
Manufacturer	YARA UKI
Fertilizer type	NPK 21-4-10 mila PKEXLG
Spread width [m]	36
Vane type	E6-T
Vane setting	1-2
Scale setting / kg/ha	5,9/333
Coll. amount [Kg/ha]	263
Height [cm] [mm]	750
Tilt angle [degrees]	4
Pattern	NS
PTO speed	540
File name	20180307_08_45.TXT

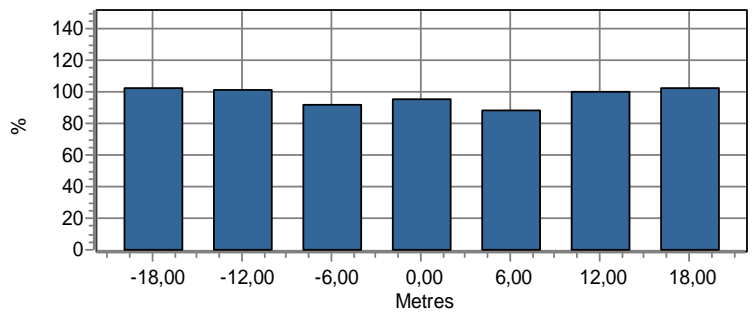
Coef. of variation [%]	6,2
Max [%]	12,2
Min [%]	-12,1

	Left [%]	Right [%]
Left/Right deviation	50,0	50,0

Specific Fertilizer Analysis

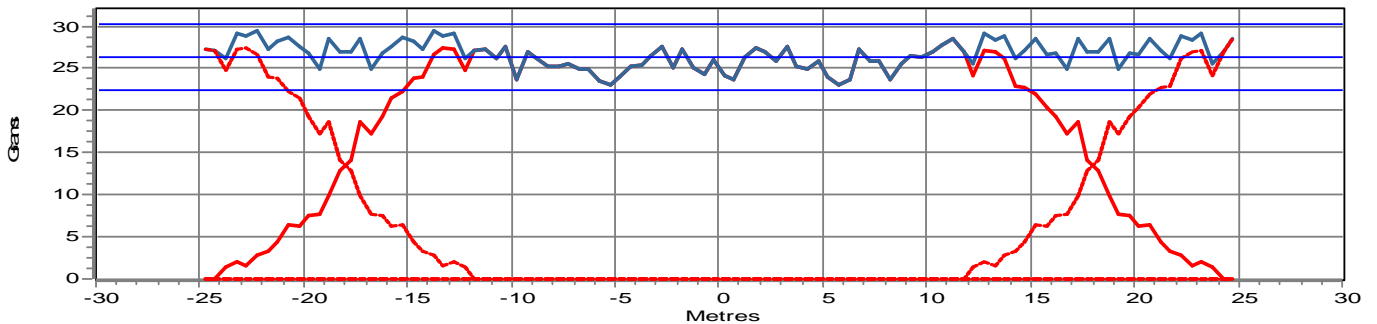
Calibration value 	Grain size variation in % 				Density 	Strength 	Flow 
	Kg	<2	2-3,3	3,3-4,75	>4,75	Kg/l	Kg
24,1	1	19	80	0	1,10	9,3	9,7

Tray Test Collection

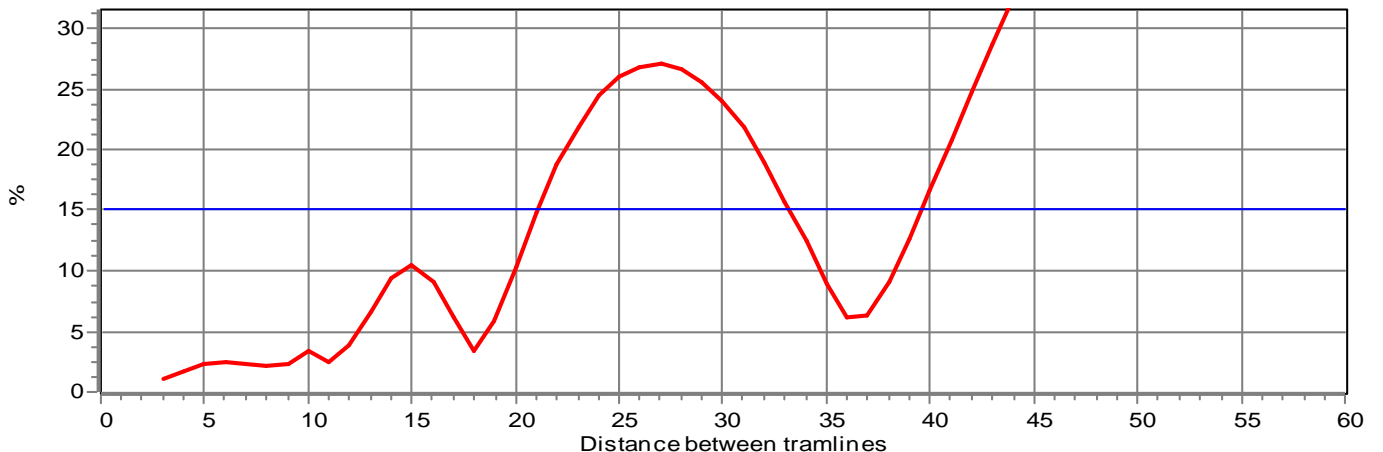


Dist. in metres	-18,0	-12,0	-6,0	0,0	6,0	12,0	18,0
Amount in %	102	101	92	95	89	100	102

Spread Pattern Including Overlap



Coefficient of Variation

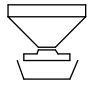
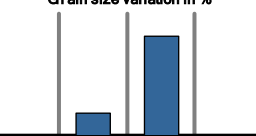
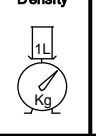
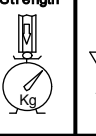



Test number	24201
Date	2018-03-07
Machine type	M35W Gød 2353
Manufacturer	YARA UKI
Fertilizer type	NPK 21-4-10 mila PKEXLG
Spread width [m]	40
Vane type	E8-T
Vane setting	1-2
Scale setting / kg/ha	6,6/349
Coll. amount [Kg/ha]	272
Height [cm] [mm]	750
Tilt angle [degrees]	0
Pattern	NS
PTO speed	650
File name	20180307 11_22.TXT

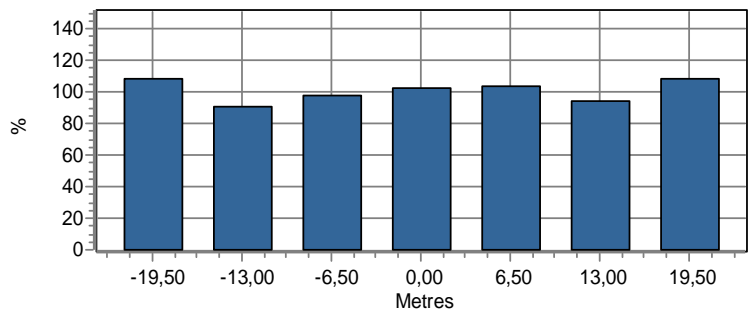
Coef. of variation [%]	6,3
Max [%]	12,1
Min [%]	-13,7

	Left [%]	Right [%]
Left/Right deviation	49,1	50,9

Specific Fertilizer Analysis

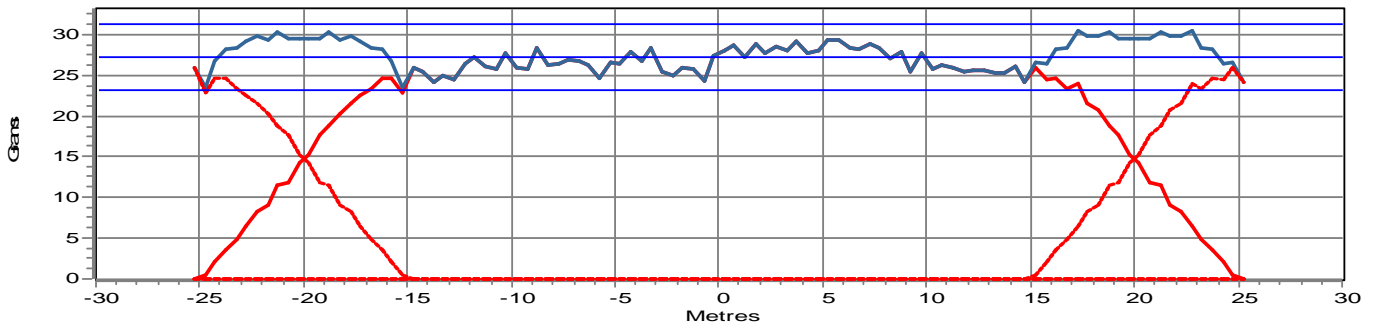
Calibration value	Grain size variation in %				Density	Strength	Flow
							
Kg	<2	2-3,3	3,3-4,75	>4,75	Kg/l	Kg	L/min
24,1	1	19	80	0	1,10	9,3	9,7

Tray Test Collection

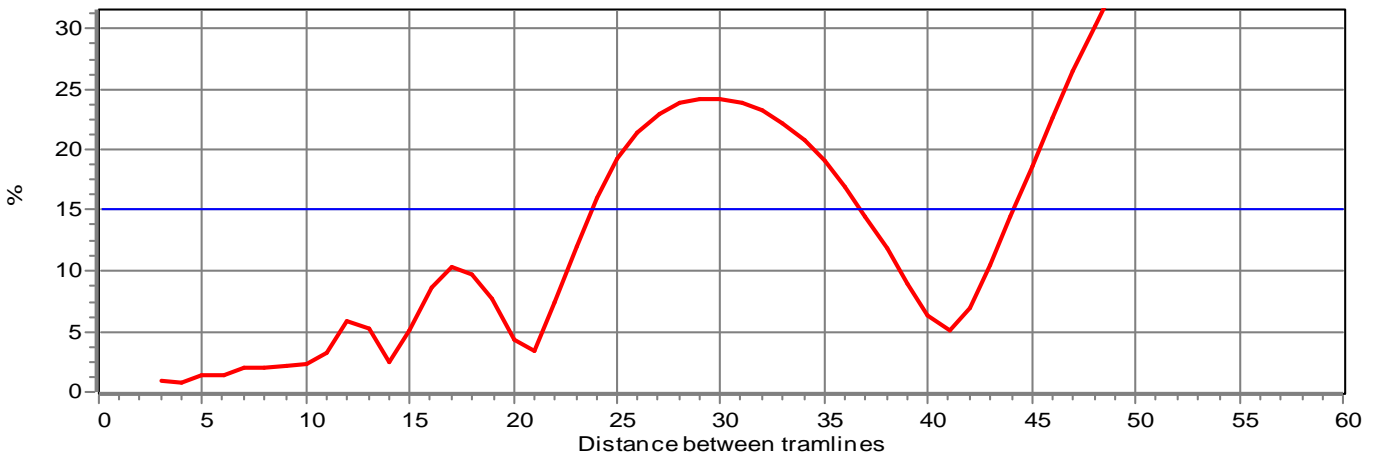


Dist. in metres	-19,5	-13,0	-6,5	0,0	6,5	13,0	19,5
Amount in %	108	91	97	102	104	94	108

Spread Pattern Including Overlap



Coefficient of Variation

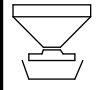
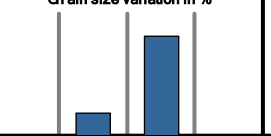
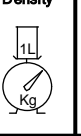
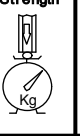
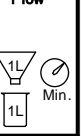


Test number	24202
Date	2018-03-07
Machine type	M35W Gød 2353
Manufacturer	YARA UKI
Fertilizer type	NPK 21-4-10 mila PKEXLG
Spread width [m]	42
Vane type	E8-T
Vane setting	1-2
Scale setting / kg/ha	6,6/333
Coll. amount [Kg/ha]	256
Height [cm] [mm]	750
Tilt angle [degrees]	2
Pattern	NS
PTO speed	650
File name	20180307 11_25.TXT

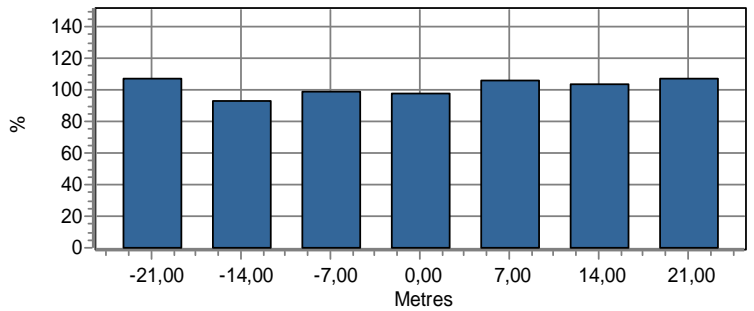
Coef. of variation [%]	5,4
Max [%]	12,8
Min [%]	-10,7

	Left [%]	Right [%]
Left/Right deviation	49,1	50,9

Specific Fertilizer Analysis

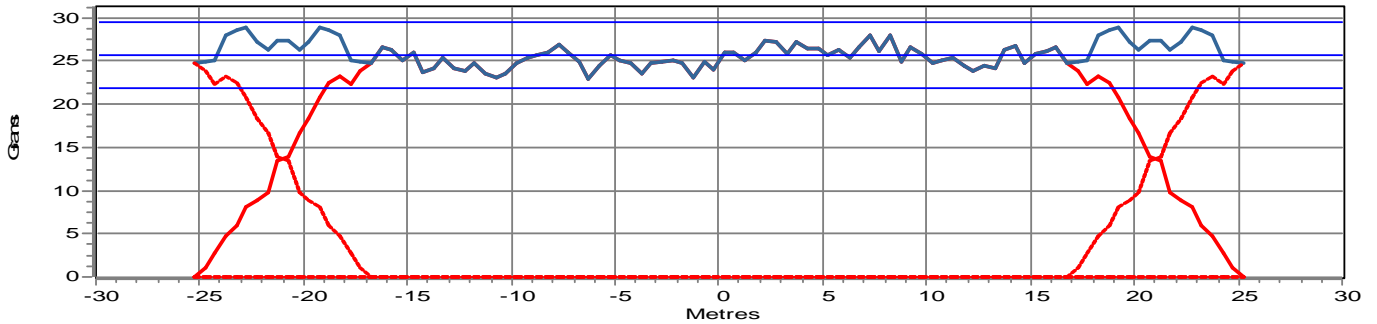
Calibration value	Grain size variation in %				Density	Strength	Flow
							
Kg	<2	2-3,3	3,3-4,75	>4,75	Kg/l	Kg	L/min
24,1	1	19	80	0	1,10	9,3	9,7

Tray Test Collection

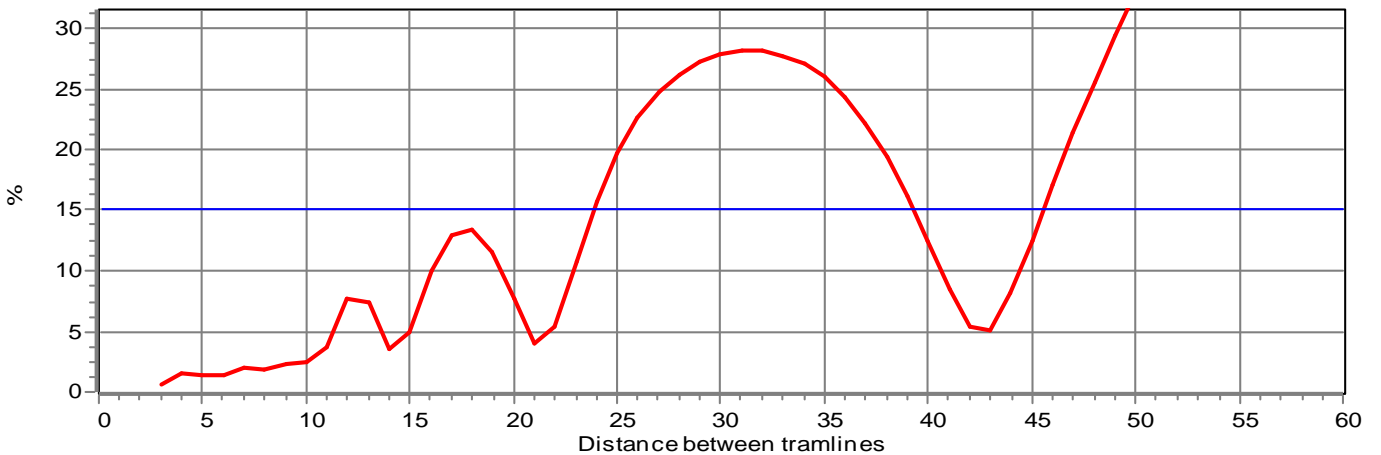


Dist. in metres	-21,0	-14,0	-7,0	0,0	7,0	14,0	21,0
Amount in %	107	93	99	97	106	103	107

Spread Pattern Including Overlap



Coefficient of Variation





BOGBALLE A/S · Bogballe · DK7171 Uldum · www.bogballe.com
Phone +45 7589 3266 · Fax +45 7589 3766 · bogballe@bogballe.com